

Cloud Video Analytics User Guide

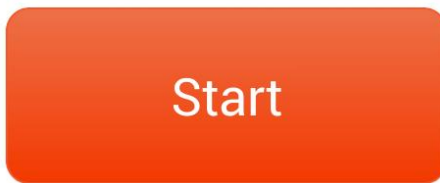
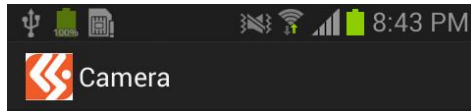
Cloud Video Analytics consists of two Android mobile apps and a central cloud processing server. One mobile device will serve as a video camera, while the other mobile device will serve as a stream player/notification display. Human motion is detected using video from the camera app. The video camera device is referred to here as the '**Camera app**', while the notification/display app is referred to as the '**Remote Monitor App**'.

Operation

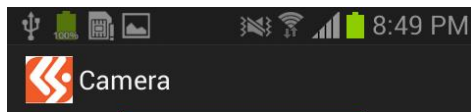
1. To install the applications on the Android OS make sure you have allowed installing unknown sources. **You can set the permission by going to Settings -> General -> Security -> Unknown Sources.**
2. Ensure the central server is operating. The server should be running 24/7, if the server is not running, contact Complex System Inc. The server is located at **IP address: 70.75.176.68** using **port: 8888.**
3. Launch the **Camera App** on Android Mobile Device first.
4. Then launch the **Remote Monitor App** on an Android Mobile Device.

Camera App Operation

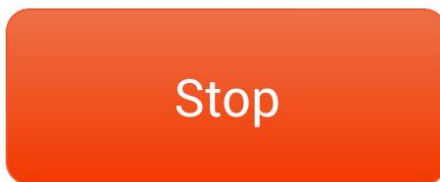
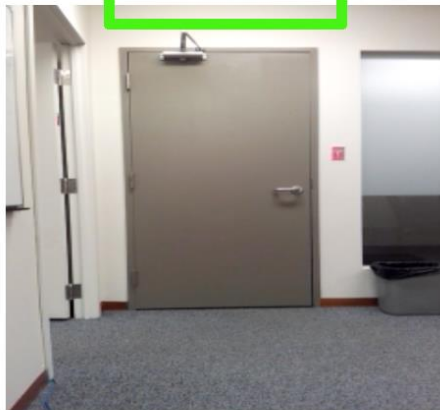
1. Once started, the **Camera** app should display video from the devices rear facing camera.
2. Press the **Start** button, to begin operation.



3. After a moment, a PIN will appear atop the screen. Make a note of this number, as it will be used to connect to this camera. The PIN is unique for each device. (Note the PIN may take up to a minute to appear).



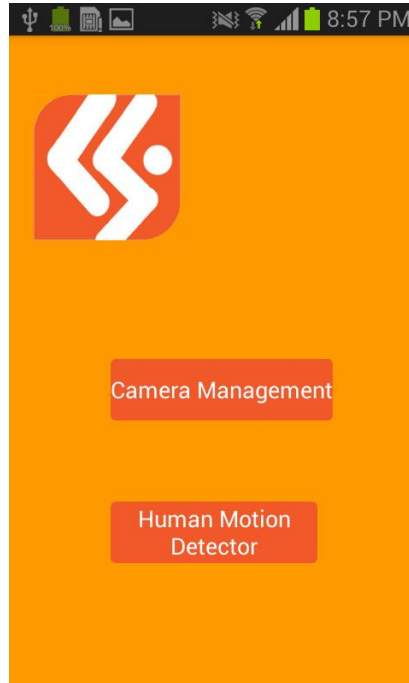
PIN: 4415



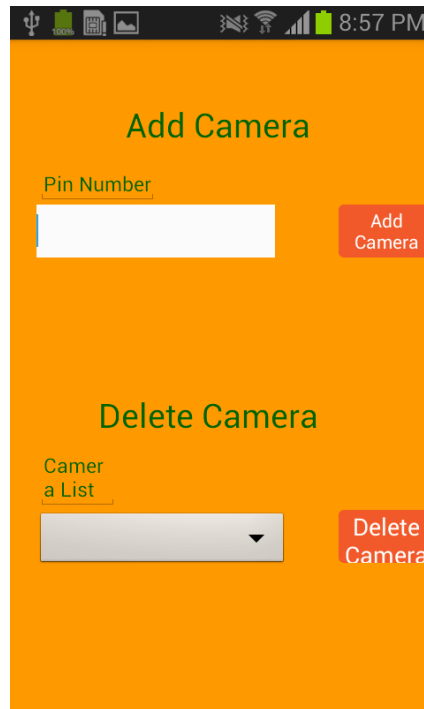
4. The **Camera** app is now ready to stream video to the server.

Remote Monitor App Operation

1. Launch the **Remote Monitor** App.
2. There are two option on the main screen, **Human Motion Detector** and **Camera Management**.



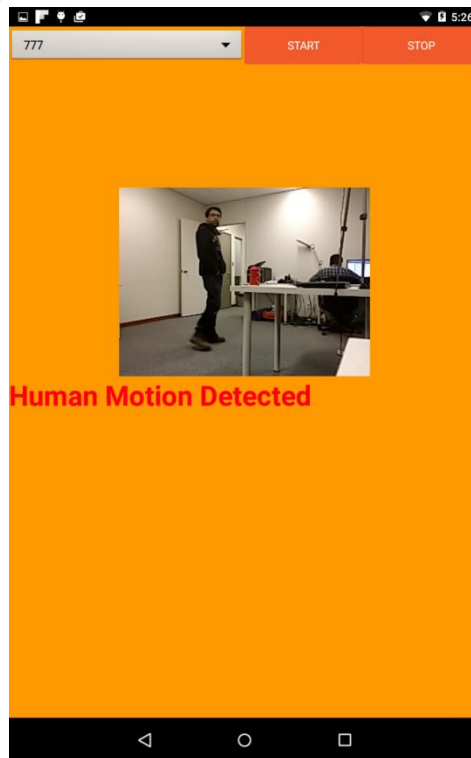
- a. **Camera Management** is used to add and delete cameras via PIN. You cannot add a camera without knowing the PIN.
 - b. **Human Motion Detector** streams video from the server, and will display a message if a human is detected. At least one camera must be added before video can be streamed.
3. Click **Camera Management**
 4. Here you can add a camera, using the PIN displayed on the **Camera** app. Type the PIN into the text box labeled '**Pin Number**'. Then press **Add Camera**.



5. Once a camera is added, it will appear in the **Camera List** dropdown menu. Cameras are remembered after you close the app.
6. To delete a camera, choose the PIN in the dropdown list, then press **Delete Camera**.
7. Once the camera is added, press the **back button** on your Android device to return to the main screen.
8. Click **Human Motion Detector**.
9. On this Screen you will see a drop down list, which shows all active cameras available, along with **Start** and **Stop** buttons.



10. In the dropdown list, choose the camera PIN entered earlier.
11. Now click **Start**. After a short while, the video will display on the page. When a human is detected, a message will appear below the video.



12. To stop showing the video, press the **Stop** button

NOTE: Make sure the video is right side up. If the video displayed on the page is upside down or sideways, adjust the orientation of the device running the **Camera** App accordingly.